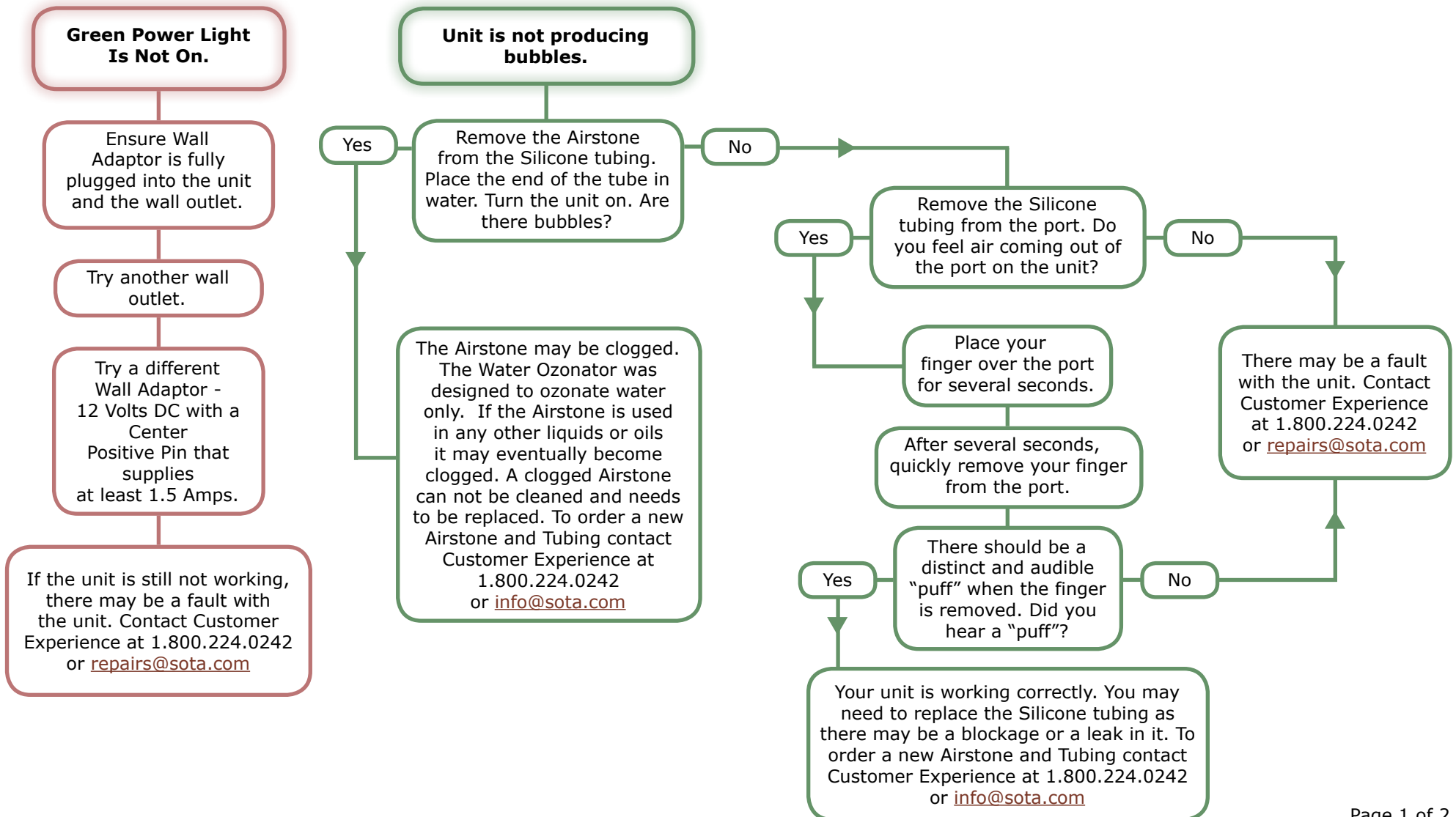


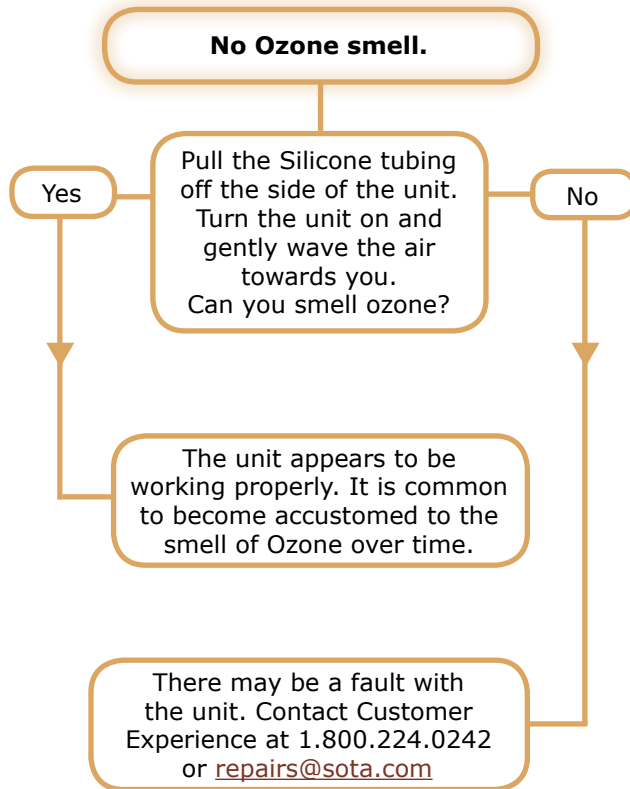


Water Ozonator WOZ5 Troubleshooting





Water Ozonator WOZ5 Troubleshooting



For Older Model with a Membrane On/Off Switch:

The Unit Does Not turn on.

The Top Label most likely needs replacing. Contact Customer Experience at 1.800.224.0242 or repairs@sota.com

For Older Model with a Membrane On/Off Switch:

When turned on, the Mode Lights flash and the Water Ozonator unit beeps and turns off.

Indicates the Wall Adaptor in use does not meet the minimum requirements to power the Water Ozonator.

The Wall Adaptor should be 12 Volts DC with a Center Positive Pin that supplies at least 1.5 Amps.

For Older Model with a Plastic On/Off Push Button:

The On/Off Push Button appears to be stuck.

During manufacturing the back of the unit can sometimes get screwed on too tightly, which interferes with the Power Button working correctly.

Unplug the Wall Adaptor.

Gently loosen the screws on the back of the unit by turning them a 1/2 turn at a time using a Phillips head screw driver.

Plug in the Wall Adaptor and test the On/Off Power Button.

If the button still appears to be stuck, repeat the steps 1 - 3 more times.

If the button continues to stick there may be a fault with the unit. Contact Customer Experience at 1.800.224.0242 or repairs@sota.com